

**Contact Management Solutions  
Experts in Customer  
Relationship Management  
through  
GoldMine®**

**prior**  
analytics Ltd

**102-104 Sheen Road, Richmond, Surrey TW9  
1UF**

**Telephone: 020 8334 1120**

**Fax: 020 7681 4496**

**[www.prior-analytics.com](http://www.prior-analytics.com)**



# **Linked Document Mover**

## ***User Guide***

### ***Further help and support***

Visit the Prior Analytics Web Site at [www.prior-analytics.com](http://www.prior-analytics.com) or send an e-mail describing your problem to [support@prior-analytics.com](mailto:support@prior-analytics.com).

### ***Disclaimer and Notice to Users***

The information in this Training Manual is distributed on an 'as is' basis without warranty. While every precaution has been taken in the preparation of this manual, Prior Analytics Ltd shall assume no liability to any person or entity with respect to any liability, loss or damage caused or alleged to be caused directly or indirectly by the instructions contained in this manual. All scenarios described herein are fictional.



# Contents

---

<b>Contents</b> .....	2
<b>1. Linked Document Mover - User Guide</b> .....	3
<b>2. SQL Queries</b> .....	4

## 1. Linked Document Mover – User Guide

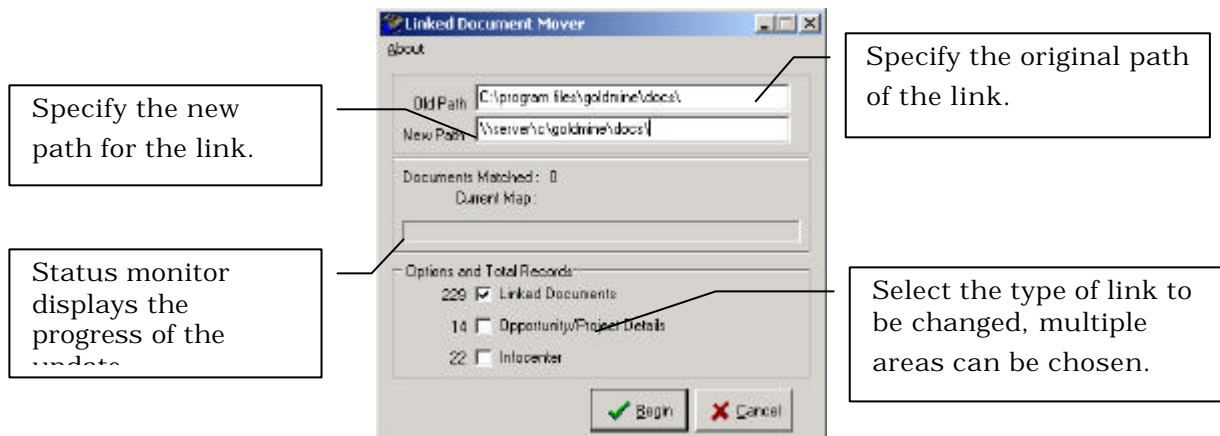
**Disclaimer:** The Linked Document Mover is a utility provided by Prior Analytics Limited entirely free of charge. Whilst all possible effort has been made to ensure that the Linked Document Mover functions correctly Prior Analytics Limited cannot be held responsible for any loss of data to your system. Therefore it is used entirely at the users own risk and we advise that a full backup is made before using the program.

The Linked Document Mover allows the links to documents held within GoldMine to be updated globally. The program allows global changes to the document links in the

- Info Centre
- Links tab
- Opportunity & Project Manager

It is entirely synchronisation aware and will make the necessary updates to the Transaction Logs.

It works by searching for an existing path to documents and once found will update the path with a newly specified path.



For example using the Link Document Mover if the Old Path is specified as:

**c:\program files\GoldMine\Docs\**

and the new path is be specified as:

**\\server\c\GoldMine\Docs\**

Then this would mean that all documents that have the path

**c:\program files\GoldMine\Docs\**

Would be changed to

**\\server\c\GoldMine\Docs\**

So the document originally found at:

**c:\program files\GoldMine\Docs\Marketing\example.doc**

would then become

**\\server\c\GoldMine\Docs\Marketing\example.doc**

**Ensure you make a backup of your data before beginning the process you will not be able to undo changes.**

## 2. SQL Queries

---

To check the linked documents that exist within your system use the following SQL queries.

To check the paths for the LinkSelect \* from ContSupp where rectype = 'L'  
The fields that contain the linked document information are:  
Address1, Address2, Linkdoc

Select \* from Infomine where Linkdoc like '%FILENAME=%'

Select \* from Opmgr where

### **Copyright and Trademarks**

GoldMine, GoldSync and HEAT are registered trademarks of FrontRange Solutions Ltd. GoldMine FrontOffice 2000, GoldMine Sales and Marketing, GoldMine Service and Support, HEATWeb and GoldMine Web are trademarks of FrontRange Solutions Ltd. Other products and brands are registered trademarks or trademarks of their respective owners/companies.

**Notice to Users** – Please back up your data before experimenting with any sort of automated routines. No representations or warranties, expressly or implicitly, of any kind are made by or with respect to anything in this report. In no event shall Prior Analytics Limited be liable for any incidental, indirect, special or consequential damages out of or related to this report or any use thereof, even if Prior Analytics has been advised, knew or should have known of the possibility of such damages.